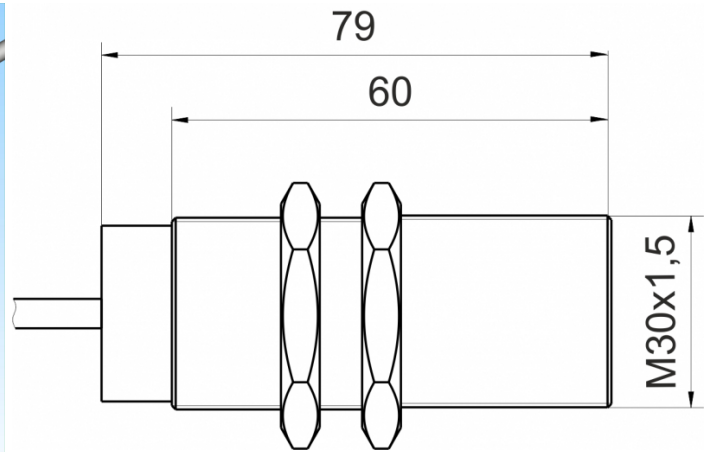
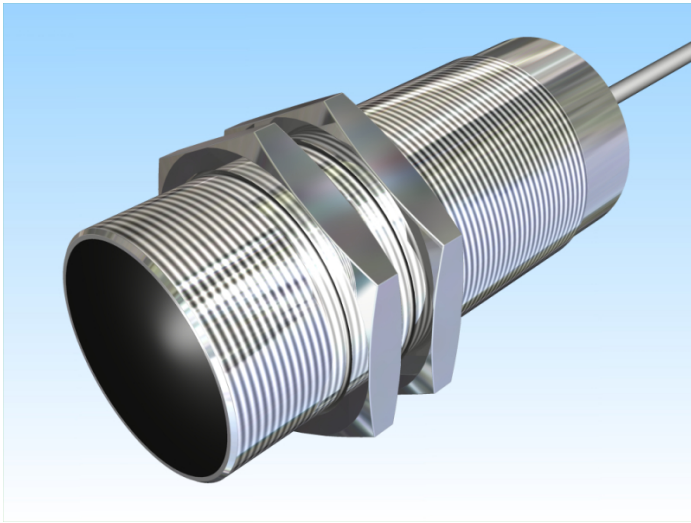


[Article Page](#)

Product Description

inductive sensor DC






Name
Order number
Switching distance
Mounting

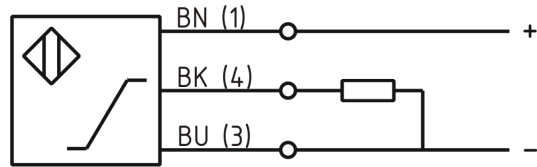
Switch type

Signal Type
Connection

Connection diagramm

SJ10-M30MB80-ANUI
08313103010
from 5 mm to 10 mm

-  shielded
-  analog
Analog Current/Voltage
-  Cable



fine-pitch thread M30 x 80

Dimension (in mm)
Technical Specification
Special features

Output Voltage 0 ... 10 Volt
Output Current 0 ... 20 mA
18 - 30 VDC
≤ 10 %
≤ 15 mA
100 Hz
+/- 5 %
< 0,02 %
≤ 10 %
300 ms
IP67
DIN EN 60947-5-7:2004-06
Brass, nickel plated
PBT
2 m
DC 13
PVC LIYY grau (grey)
24 V DC
4x0.5 mm²
> 1 kOhm

Operating voltage
Max. ripple
No load current
Switching frequency
Temperature drift
Repeat accuracy
Linearity
Time delay
Protection category
EMC-level
Housing material
Material active face
Cable length
Utilisation category
Cable material
Nominal operating voltage
Cable cross
internal load resistor

Errors and omissions exceptet