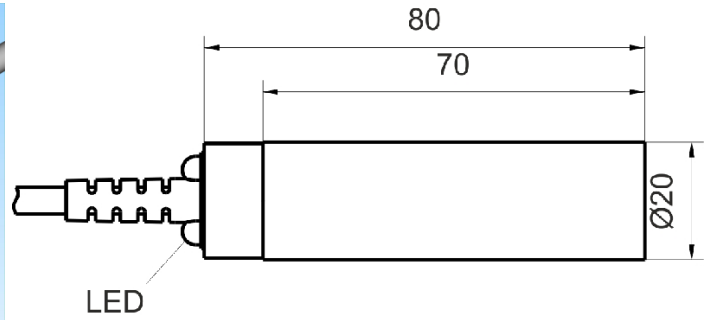
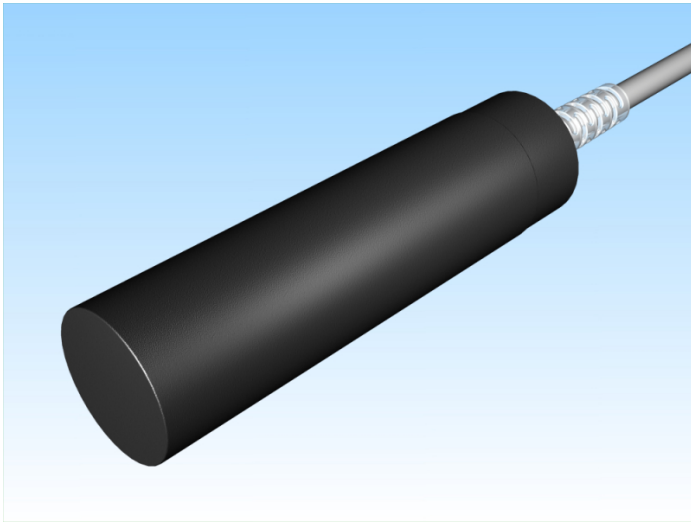


[Article Page](#)

Product Description

inductive sensor DC




Name  
Order number  
Switching distance  
Mounting


SJ12-G20KB80-DPS  
08313201217  
12 mm

 shielded

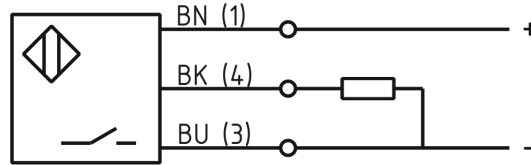
Switch type

 N.O.  
DC PNP

Signal Type  
Connection

 Cable

Connection diagramm



D 20 x 80

Dimension (in mm)  
Technical Specification  
Special features  
Operating voltage  
Max. ripple  
Voltage drop  
Max. load current  
No load current  
Leakage current  
Switching frequency  
Switching hysteresis  
Operating temperature  
Temperature drift  
Repeat accuracy  
Switching state  
Time delay  
Short-circuit proof  
Overload protection  
Reverse voltage protection  
Protection category  
EMC-level  
Housing material

quasi-shielded mounting  
10 - 30 VDC  
≤ 10 %  
2 V  
200 mA  
≤ 10 mA  
≤ 10 µA  
500 Hz  
≤ 15 %  
-25 ° C to 70 ° C  
≤ 10 %  
≤ 10 %  
LED  
300 ms  
yes  
yes  
yes  
IP67  
DIN EN 60947-5-2: 2008  
Plastic



## SJ12-G20KB80-DPS

Pulsotronic GmbH & Co. KG Neue Schichtstraße 14b 09366 Niederdorf Deutschland +49 (0)37296 930-200

Cable length	2 m
Utilisation category	DC 13
Cable material	PVC LIYY grau (grey)
Nominal operating voltage	24 V DC
Cable cross	3x0.34 mm <sup>2</sup>

**Errors and omissions exceptet**