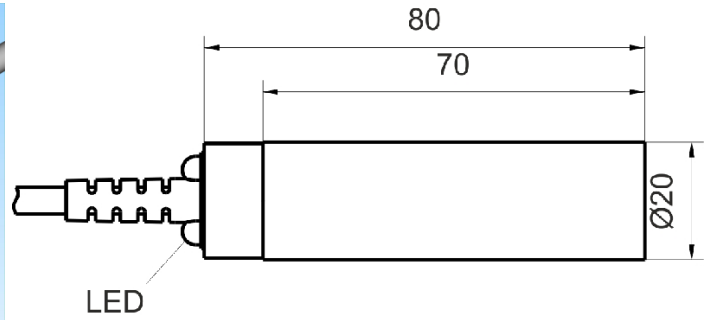
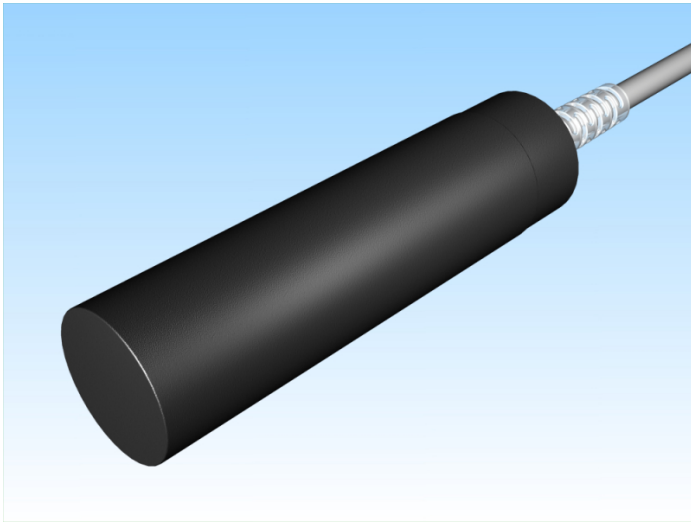



[Article Page](#)

Product Description

inductive sensor DC

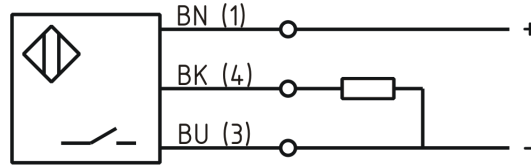


Name SJ20-G20KN80-DPS
 Order number 08313202017
 Switching distance 20 mm
 Mounting  non shielded

Switch type  N.O.
 Signal Type DC PNP

Connection  Cable

Connection diagramm



Dimension (in mm) D 20 x 80
 Technical Specification
 Operating voltage 10 - 30 VDC
 Max. ripple ≤ 10 %
 Voltage drop 2 V
 Max. load current 200 mA
 No load current ≤ 10 mA
 Leakage current ≤ 10 µA
 Switching frequency 300 Hz
 Switching hysteresis ≤ 15 %
 Operating temperature -25 ° C to 70 ° C
 Temperature drift ≤ 10 %
 Repeat accuracy ≤ 10 %
 Switching state LED
 Time delay 300 ms
 Short-circuit proof yes
 Overload protection yes
 Reverse voltage protection yes
 Protection category IP67
 EMC-level DIN EN 60947-5-2: 2008
 Housing material Plastic
 Cable length 2 m



SJ20-G20KN80-DPS

Pulsotronic GmbH & Co. KG Neue Schichtstraße 14b 09366 Niederdorf Deutschland +49 (0)37296 930-200

Utilisation category
Cable material
Nominal operating voltage
Cable cross

DC 13
PVC LIYY grau (grey)
24 V DC
3x0.34 mm²

Errors and omissions exceptet