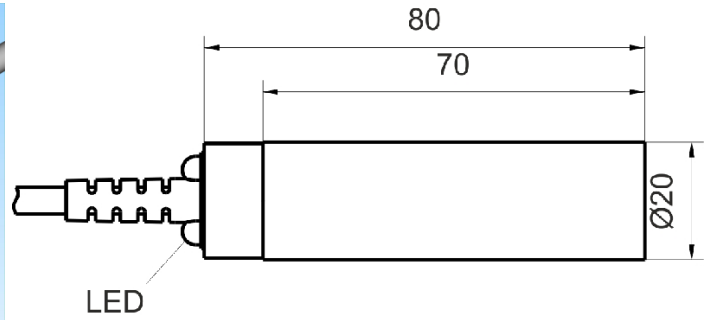
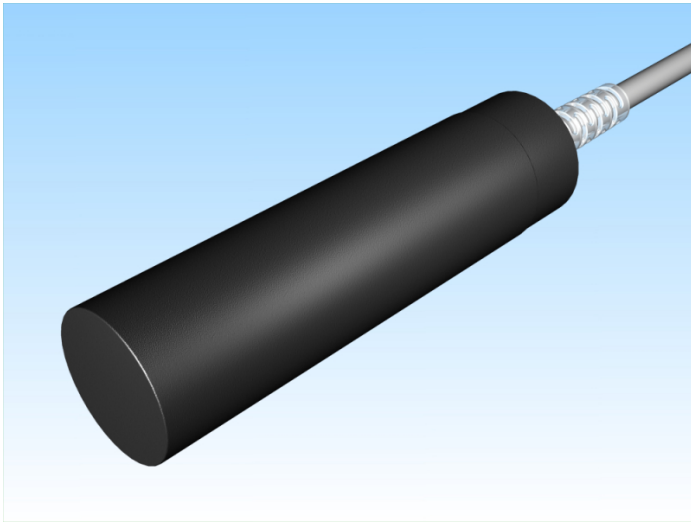


[Article Page](#)


Product Description

inductive sensor DC




Name
Order number
Switching distance
Mounting


SJ20-G20KN80-DPS
08313202017
20 mm

 non shielded

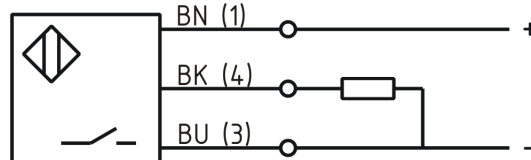
Switch type

 N.O.
DC PNP

Signal Type
Connection

 Cable

Connection diagramm



Dimension (in mm)
Technical Specification

D 20 x 80

Operating voltage
Max. ripple
Voltage drop
Max. load current
No load current
Leakage current
Switching frequency
Switching hysteresis
Operating temperature
Temperature drift
Repeat accuracy
Switching state
Time delay
Short-circuit proof
Overload protection
Reverse voltage protection
Protection category
EMC-level
Housing material
Cable length

10 - 30 VDC
≤ 10 %
2 V
200 mA
≤ 10 mA
≤ 10 µA
300 Hz
≤ 15 %
-25 ° C to 70 ° C
≤ 10 %
≤ 10 %
LED
300 ms
yes
yes
yes
IP67
DIN EN 60947-5-2: 2008
Plastic
2 m



SJ20-G20KN80-DPS

Pulsotronic GmbH & Co. KG Neue Schichtstraße 14b 09366 Niederdorf Deutschland +49 (0)37296 930-200

Utilisation category
Cable material
Nominal operating voltage
Cable cross

DC 13
PVC LIYY grau (grey)
24 V DC
3x0.34 mm²

Errors and omissions exceptet