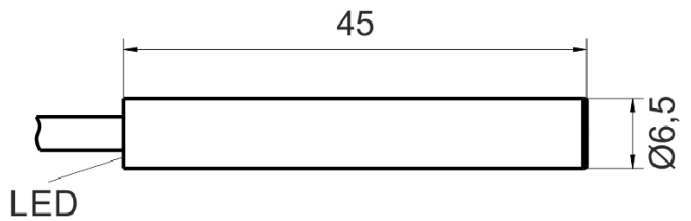
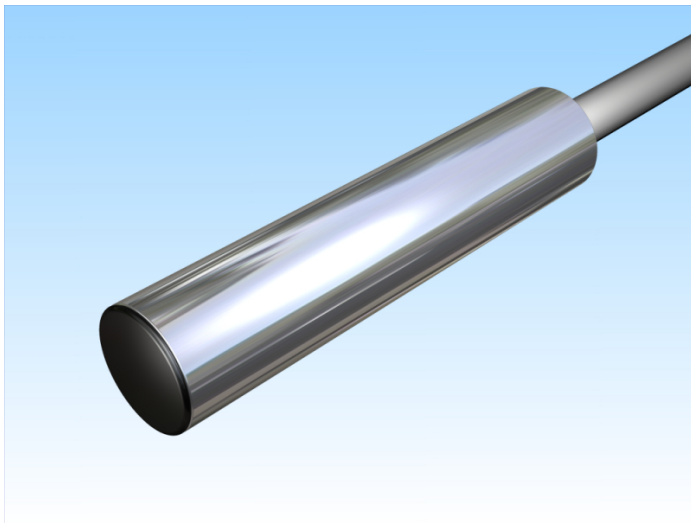


[Article Page](#)


Product Description

inductive sensor DC




Name
Order number
Switching distance
Mounting


SJ3-G6,5MB45-DPS
08313650317
3 mm

 shielded

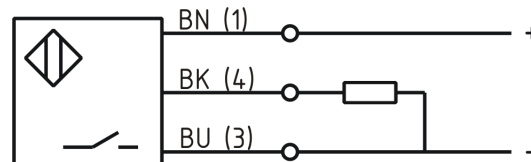
Switch type

 N.O.
DC PNP

Signal Type
Connection

 Cable

Connection diagramm



D 6,5 x 45

Dimension (in mm)
Technical Specification
Operating voltage
Max. ripple
Voltage drop
Max. load current
No load current
Leakage current
Switching frequency
Switching hysteresis
Operating temperature
Temperature drift
Repeat accuracy
Switching state
Time delay
Short-circuit proof
Overload protection
Reverse voltage protection
Protection category
EMC-level
Housing material
Material active face

10 - 30 VDC
≤ 10 %
1 V
200 mA
≤ 10 mA
≤ 10 µA
1000
≤ 15 %
-25 ° C to 70 ° C
≤ 10 %
< 2 %
LED
100 ms
yes
yes
yes
IP67
DIN EN 60947-5-2: 2008
Brass, nickel plated
POM



SJ3-G6,5MB45-DPS

Pulsotronic GmbH & Co. KG Neue Schichtstraße 14b 09366 Niederdorf Deutschland +49 (0)37296 930-200

Cable length	2 m
Utilisation category	DC 13
Cable material	PVC grau LIYY
Cable cross	3x0.14 mm ²

Errors and omissions exceptet