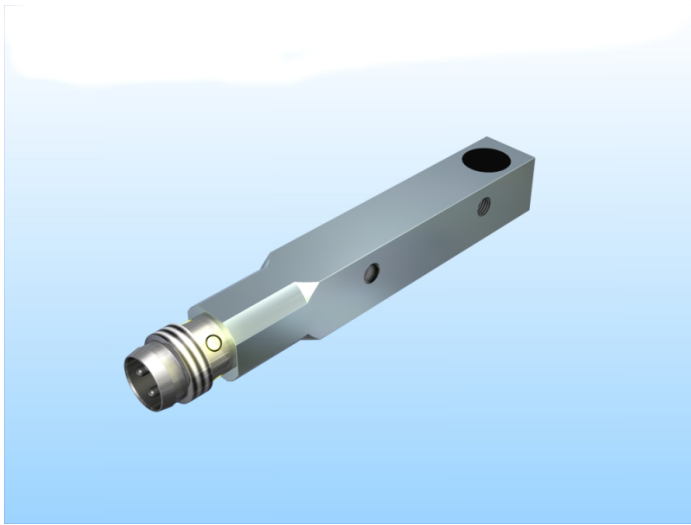
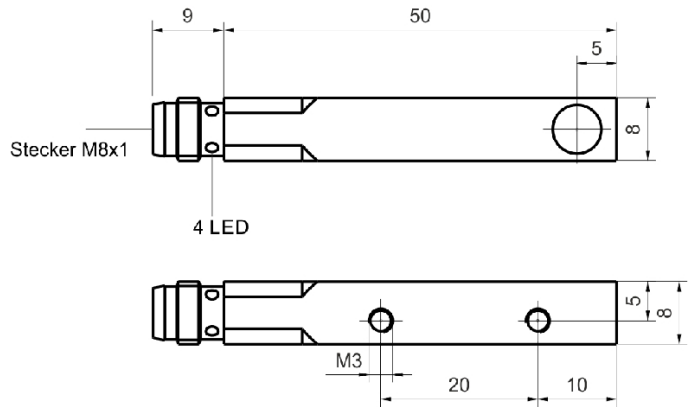


[Article Page](#)

Product Description

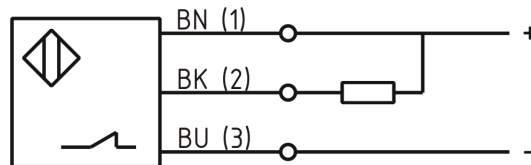


inductive sensor DC



Name  
Order number  
Switching distance  
Mounting  
  
Switch type  
  
Signal Type  
Connection  
Connection diagramm

SJ3-Q8MB60-DNÖ-V1  
08313880341  
3 mm



Q 8 x 8 x 60

Dimension (in mm)  
Technical Specification  
Operating voltage  
Max. ripple  
Voltage drop  
Max. load current  
No load current  
Leakage current  
Switching frequency  
Switching hysteresis  
Operating temperature  
Temperature drift  
Repeat accuracy  
Switching state  
Time delay  
Short-circuit proof  
Overload protection  
Reverse voltage protection  
Protection category  
EMC-level  
Housing material  
Material active face  
Utilisation category

10 - 30 V DC  
≤ 10 %  
1,5 V  
200 mA  
≤ 10 mA  
≤ 10 µA  
1000 Hz  
≤ 15 %  
-25 ° C to 70 ° C  
≤ 10 %  
≤ 10 %  
LED  
300 ms  
yes  
yes  
yes  
IP 67  
nach DIN EN 60647-5-2: 2008  
Brass, nickel plated  
PBT  
DC 13



## SJ3-Q8MB60-DNÖ-V1

Pulsotronic GmbH & Co. KG Neue Schichtstraße 14b 09366 Niederdorf Deutschland +49 (0)37296 930-200

Contact material  
Contact surface material  
Termination  
Mounting

Cu  
NiAu  
Connector M8 3pin  
quasi-shielded

**Errors and omissions exceptet**