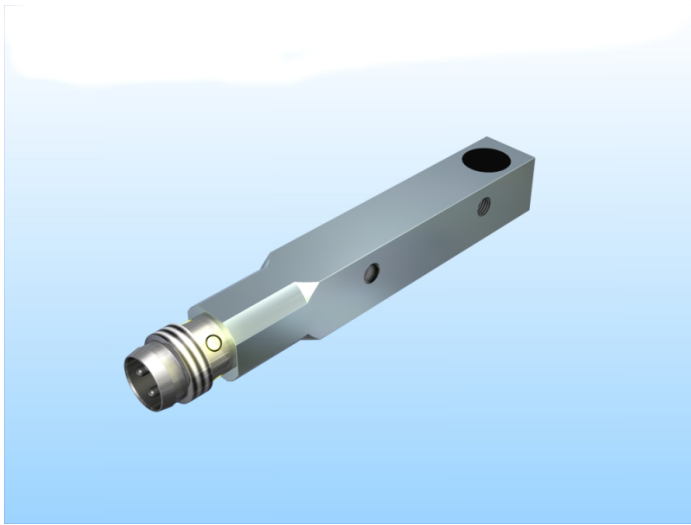
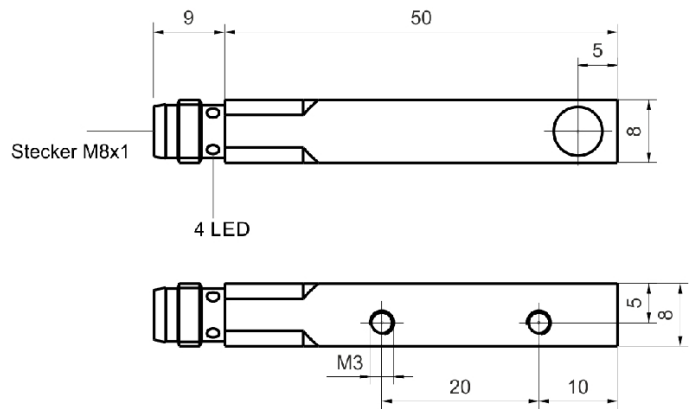


[Article Page](#)

Product Description



inductive sensor DC

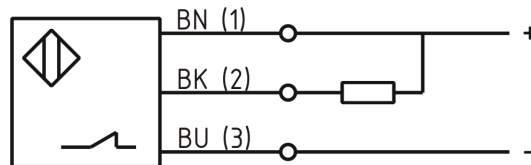


Name
Order number
Switching distance
Mounting

Switch type

Signal Type
Connection
Connection diagramm

SJ3-Q8MB60-DNÖ-V1
08313880341
3 mm



Q 8 x 8 x 60

Dimension (in mm)
Technical Specification
Operating voltage
Max. ripple
Voltage drop
Max. load current
No load current
Leakage current
Switching frequency
Switching hysteresis
Operating temperature
Temperature drift
Repeat accuracy
Switching state
Time delay
Short-circuit proof
Overload protection
Reverse voltage protection
Protection category
EMC-level
Housing material
Material active face
Utilisation category

10 - 30 V DC
≤ 10 %
1,5 V
200 mA
≤ 10 mA
≤ 10 µA
1000 Hz
≤ 15 %
-25 ° C to 70 ° C
≤ 10 %
≤ 10 %
LED
300 ms
yes
yes
yes
IP 67
nach DIN EN 60647-5-2: 2008
Brass, nickel plated
PBT
DC 13



SJ3-Q8MB60-DNÖ-V1

Pulsotronic GmbH & Co. KG Neue Schichtstraße 14b 09366 Niederdorf Deutschland +49 (0)37296 930-200

Contact material
Contact surface material
Termination
Mounting

Cu
NiAu
Connector M8 3pin
quasi-shielded

Errors and omissions exceptet