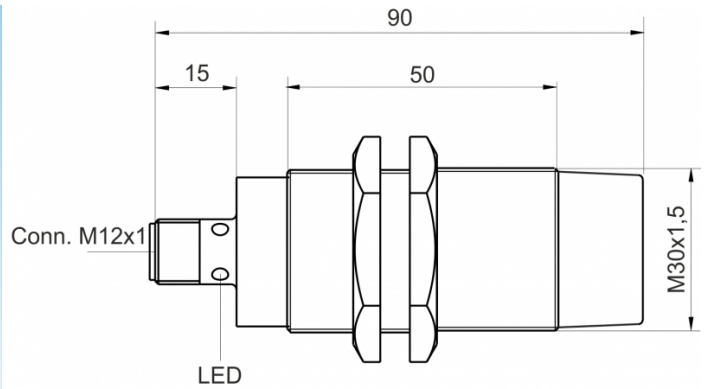
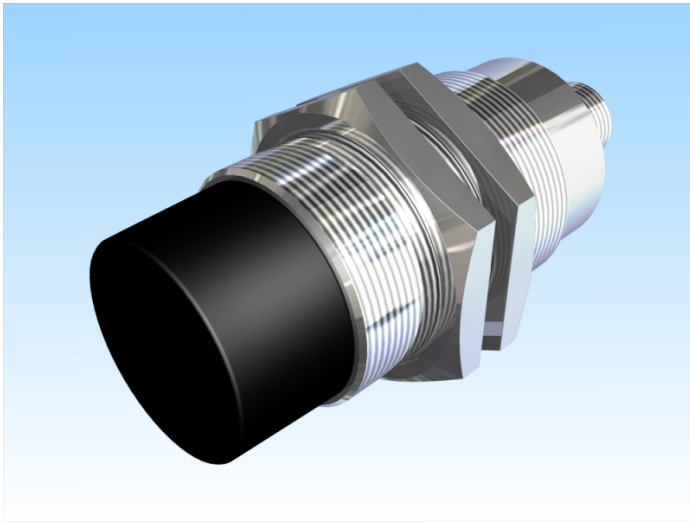


[Article Page](#)

Product Description



inductive sensor DC

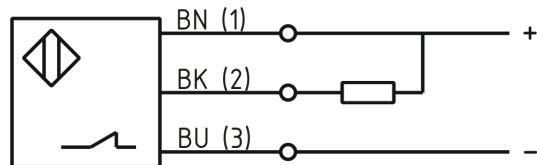


Name
 Order number
 Switching distance
 Mounting

 Switch type

 Signal Type
 Connection
 Connection diagramm

SJ40-M30MN95-DNÖ-V2
 08313403042
 40 mm
 non shielded
 N.C.
 DC NPN
 connector M12



fine-pitch thread M30 x 90

Dimension (in mm)
 Technical Specification
 Operating voltage
 Max. ripple
 Voltage drop
 Max. load current
 No load current
 Leakage current
 Switching frequency
 Switching hysteresis
 Operating temperature
 Temperature drift
 Repeat accuracy
 Switching state
 Time delay
 Short-circuit proof
 Overload protection
 Reverse voltage protection
 Protection category
 EMC-level
 Housing material
 Material active face
 Utilisation category

10 - 30 VDC
 $\leq 10 \%$
 2 V
 200 mA
 $\leq 10 \text{ mA}$
 $\leq 50 \mu\text{A}$
 100 Hz
 $\leq 15 \%$
 -25 ° C to 70 ° C
 $\leq 10 \%$
 $\leq 5 \%$
 LED
 300 ms
 yes
 yes
 yes
 IP67
 DIN EN 60947-5-2:2008
 Brass, nickel plated
 PBT
 DC 13



SJ40-M30MN95-DNÖ-V2

Pulsotronic GmbH & Co. KG Neue Schichtstraße 14b 09366 Niederdorf Deutschland +49 (0)37296 930-200

Contact material
Contact surface material
Nominal operating voltage
Termination

CuSn
NiAu
24 V DC
Connector M12 4pin

Errors and omissions exceptet