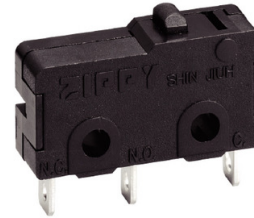
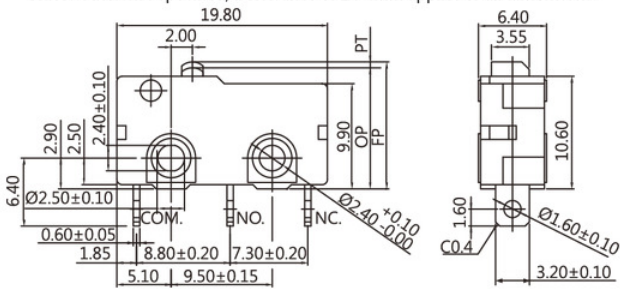
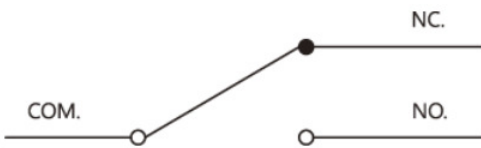


Dimensions

Unless otherwise specified, a tolerance of $\pm 0.4\text{mm}$ applies to all dimensions.



Contact Configuration



Specifications

Operating frequency(mechanical):

120 Operation / min

Operating frequency(electrical):

10~30 Operation / min

Contact resistance:

300m Ω (max)

Insulation resistance(at 500 VDC)

100M Ω (Min)

Service life(mechanical)

Min. 10,000,000 Operations

Service life(electrical)

5A-Min. 10,000 Operations

Rating

0.1A/5A 125/250VAC ; 0.1A/5A 30VDC

Operating Force

MODEL	Rating	D	L	S	H	Q	T
SM	0.1A	*	*	*	*	*	*
	5A			*	*	*	*

NOTE : The Symbol " * " to represent the result is accepted

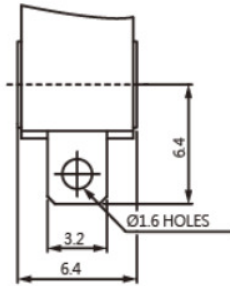


Application

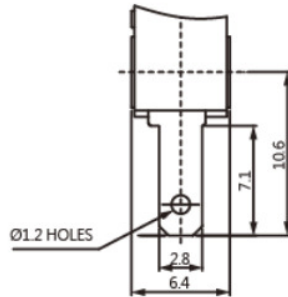
- Telephone
- Air Conditioner
- Computer
- Humidifier
- Alarm
- Time Recorder
- Mixer
- Chopper
- Solder Gun
- Neon Phone
- Fax Machine
- Joystick
- Water Pump
- Gas Detector
- Pencil Sharpener
- Money Sorter
- Food Processor
- Electric Knife
- Toy Car
- Juicer
- Electric Steak Pan

Terminal Types

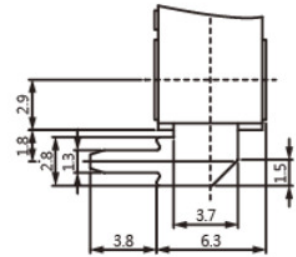
A TYPE



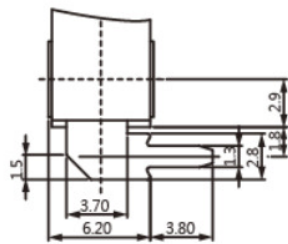
B TYPE



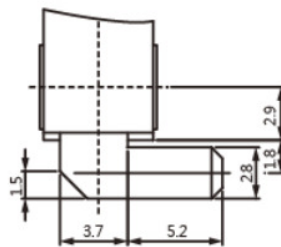
C TYPE



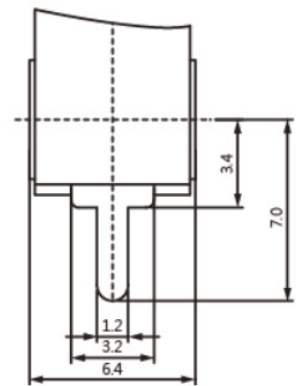
D TYPE



E TYPE



P TYPE



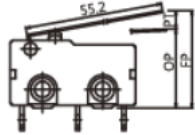
Order Information

S M	—	0 5	S	—	0 3	P	0	—	Z
SERIES PREFIX		C O D E	C O D E		C O D E	C O D E	C O D E		R O H S C O D E
		RATING CURRENT	OPERATING FORCE		ACTUATOR TYPE	TERMINAL TYPE	CIRCUIT ARRANGEMENT		
		P1 0.1A 125/250VAC	T MAX HEAVIER		00	A	0 S.P.D.T.		
		05 5A 125/250VAC	Q HEAVIER		01	B	1 S.P.S.T. NO		
			H HEAVY		02	C	2 S.P.S.T. NC		
			S STANDARD		03	D			
			L LIGHT		04	E			
			D SLIGHT		∴	P			

#NOTE		
ITEM	RATING CURRENT	OPERATING FORCE
1	Code:P1	T,Q,H,S,L,D
2	Code:05	T,Q,H,S

Operating Characteristics

SWITCH TYPE	PART SUFFIX	OF Max. (gf)		OP (mm)	PT Max. (mm)	OT Min. (mm)	MD Max. (mm)	FP Max. (mm)	RF Min. (gf)
		H	S						
SM- □□□ -00 □□ -Z		H	249	11.4±0.3	1.1	0.4	0.2	12.2	50
		S	146						35
		L	104						20
SM- □□□ -01 □□ -Z		H	66	11.8±0.8	3.6	0.6	0.8	14.6	9
		S	40						6
		L	30						3
SM- □□□ -02 □□ -Z		H	58	11.8±0.9	4.0	0.6	0.8	14.9	9
		S	36						6
		L	25						6
SM- □□□ -03 □□ -Z		H	45	11.8±1.5	6.1	0.8	1.5	16.4	6
		S	28						4
		L	20						5
SM- □□□ -04 □□ -Z		H	56	13.7±1.0	4.6	0.8	0.8	17.3	13
		S	34						8
		L	25						5
SM- □□□ -05 □□ -Z		H	60	17.5±0.8	3.8	0.8	0.8	20.5	15
		S	35						8
		L	25						6
SM- □□□ -06 □□ -Z		H	48	19.0±1.5	5.7	1.0	1.0	23.2	10
		S	28						6
		L	20						4
SM- □□□ -07 □□ -Z		H	30	11.8±2.0	8.6	1.5	1.8	18.4	7
		S	20						4
		L	15						2
SM- □□□ -08 □□ -Z		H	30	-2.3±3.0	6.0	1.0	1.9	5.4	3
		S	20						4
		L	15						2

SWITCH TYPE	PART SUFFIX	OF Max. (gf)		OP (mm)	PT Max. (mm)	OT Min. (mm)	MD Max. (mm)	FP Max. (mm)	RF Min. (gf)
SM- □□□ -09 □□ -Z		H	18	11.8±3.0	13.3	1.0	2.9	22.1	4
		S	12						2.5
		L	8						1.5