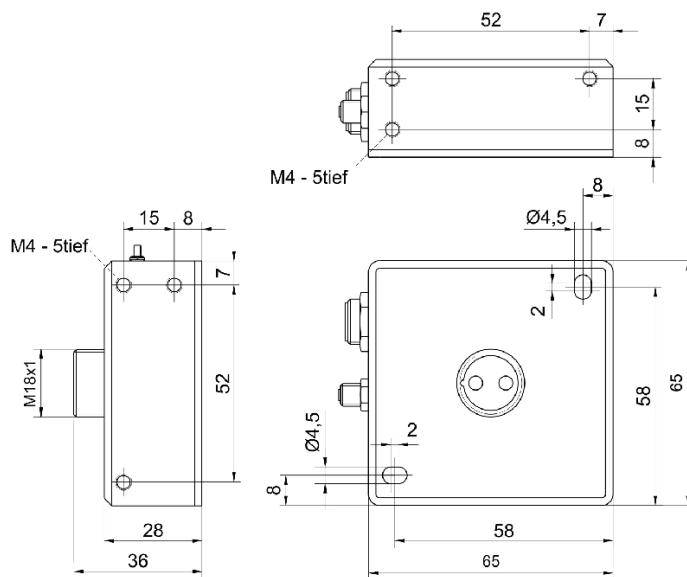
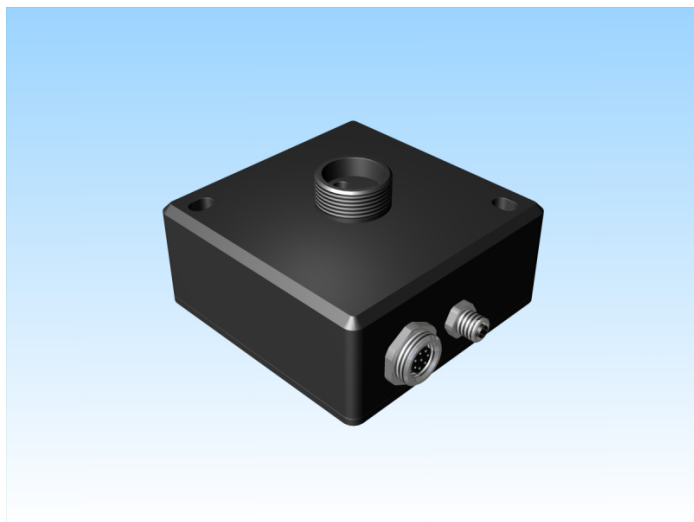


[Article Page](#)

Product Description

color sensor



Name  
Order number  
Switch type

SPECTRO-3-FIO-JR  
08386009743

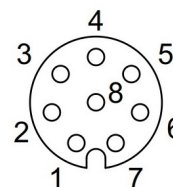
Signal Type  
Illuminant  
Connection

digital  
PNP/NPN  
 White light

Polschema

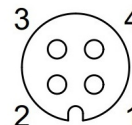
Socket

SPS  
Binder 712, 8 pol.



- 1 wh GND (0V)
- 2 bn +24V DC (±10%)
- 3 gn IN 0
- 4 ye OUT 0
- 5 gy OUT 1
- 6 pk OUT 2
- 7 bu OUT 3
- 8 rd OUT 4

PC  
Binder 707, 4 pol.



- 1 +24V DC
  - 2 GND (0V)
  - 3 RxD
  - 4 TxD
- Q 65 x 36 x 65

Dimension (in mm)  
Technical Specification  
Special features

Big assortment of fiber optics available (reflected light or transmitted light operation)

Signal type	Fibre-optic sensor
Operating voltage	21,6 - 26,4 VDC
Max. load current	100 mA
No load current	< 160 mA
Switching frequency	35 kHz
Temperature drift	< 0,01 % / °C
Repeat accuracy	+/- 1 Digit in the x, y color range at 12 bit
Digital output	, OUT 0 ... OUT 4, digital (0V/+Ub), 100 mA max. switching current npn, pnp-output available (bright-, dark-switching can be switched over)
Natural extraneous light	5000 Lux in AC-mode
Artificial extraneous light	5000 Lux in AC-mode
Material of light outlet	Glas
Impulse delay	einstellbar/ adjustable 0 ms ... 100 ms
Amplifying adjustable	8 fach/ 8-fold
Tolerance limit adjustable	ja
Working range	from 1 to 500 mm
Short-circuit proof	yes
Overload protection	yes
Reverse voltage protection	yes
Protection category	IP54
EMC-level	DIN EN 60947-5-2
Housing material	Aluminum
Termination	connection to PLC: 8-pole fem. connector (Binder Series 712), connection to PC: 4-pole fem. connector (Binder Series 707)
Interface	parameterisable under Windows®
Color memory	non-volatile EEPROM, 31 colors max.
Averaging	shiftable (over 32768 values max.)
Teach In	via PC or PLC
Size of light spot	0,6 ... 20 mm depends on the fiber optics used

**Errors and omissions exceptet**