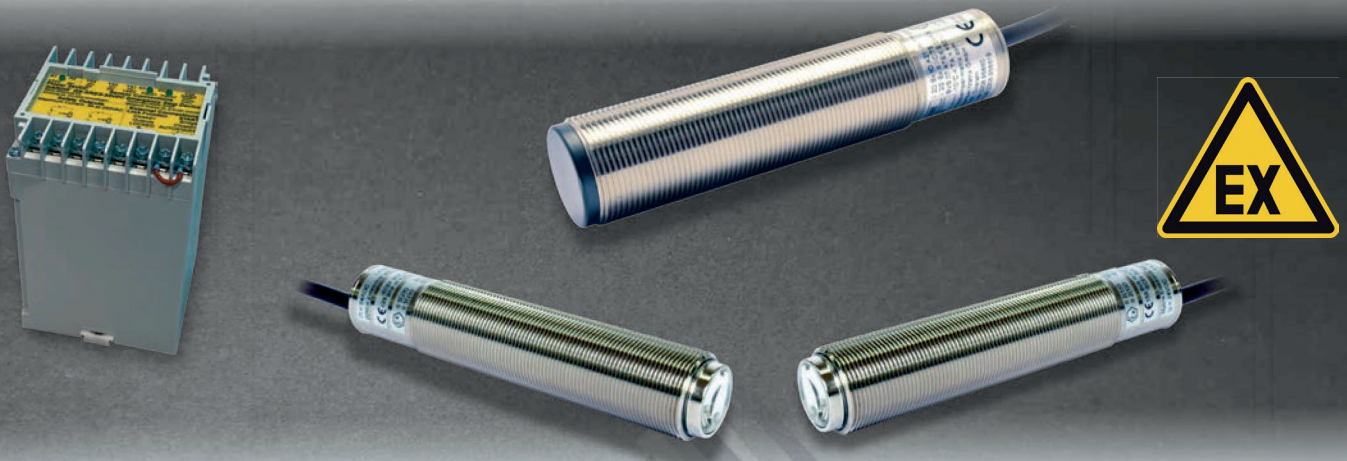


# Safety sensors for personal protection in hazardous areas!



**The only ones on the market with Ex-d approval and approval according to safety category 4 or SIL 3 and PL e!**

## Light barriers of the IGN, IGD (with Ex approval) and IGS (without Ex approval) families

- Can be used directly in Ex zones 1, 2, 21, 22 (gas and dust Ex), can radiate into Ex zones 0 and 20
- Versions with restart interlock, contamination output, alignment aid
- Performance level (PL e), BWS type 4, safety category 4, safety integration level (SIL 3)
- Two safety outputs OSSD 1 and OSSD 2
- Operating ranges up to 30 m
- Ex d versions
- M30 versions in metal housing with IP65, Ip67 protection

## Inductive proximity switches of the ISN, ISD (with Ex approval) and ISS (without Ex approval)

- Suitable for use in Ex zones 1, 2, 20/21, 22 (gas and dust Ex)
- Performance level (PL e), safety category 4, safety integration level (SIL 3)
- Two safety outputs OSSD A1 and OSSD A2
- Analog outputs, fail-safe
- Ex d versions
- M30 versions in metal housing with protection class IP65, IP67
- Switching distances from 2 ... 15 mm

**Note: The safety sensors may only be used in conjunction and exclusively with downstream safety switching devices (relay safety safety switching devices (relay safety combinations, safety PLC).**



# Company Group



## **Tippkemper-Matrix GmbH**

Meegener Str. 43  
D-51491 Overath-Marialinden  
Telefon: +49 (0)2206 / 9566-0  
Telefax: +49 (0)2206 / 9566-19

## **Matrix Elektronik AG**

Kirchweg 24  
CH-5420 Ehrendingen  
Tel.: +41 (0)56 / 20400-20  
Fax: +41 (0)56 / 20400-29  
[www.tippkemper-matrix.com](http://www.tippkemper-matrix.com)  
[info@tippkemper-matrix.com](mailto:info@tippkemper-matrix.com)



## **Tippkemper-Elektronik GmbH**

Borgfeld 12  
D-59302 Oelde-Stromberg  
Tel.: +49 (0)2529 / 9301-50  
Fax: +49 (0)2529 / 9301-49  
[www.tippkemper-elektronik.de](http://www.tippkemper-elektronik.de)  
[info@tippkemper-elektronik.de](mailto:info@tippkemper-elektronik.de)



## **Norsonic-Tippkemper GmbH**

Zum Kreuzweg 12  
D-59302 Oelde-Stromberg  
Tel.: +49 (0)2529 / 9301-0  
Fax: +49 (0)2529 / 9301-49  
[www.norsonic.de](http://www.norsonic.de)  
[tippkemper@norsonic.de](mailto:tippkemper@norsonic.de)