

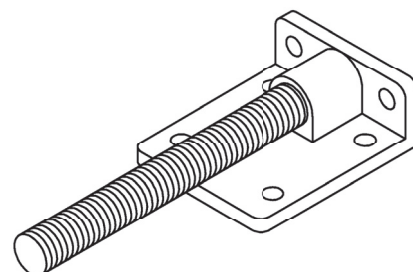
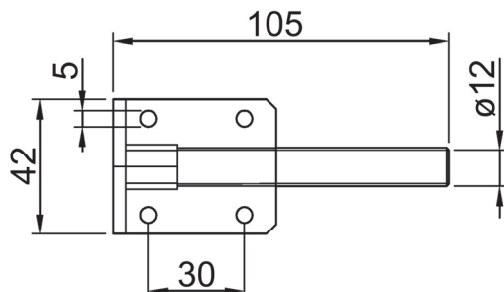
SISTEMA STEM PER BISTABILE SERIE E61...E65 STEM'S SYSTEM FOR E61...E65 BISTABLE SERIES

BASSETTA / HEADER

Materiale in nylon vetro autoestinguente
unflammable nylon glass material



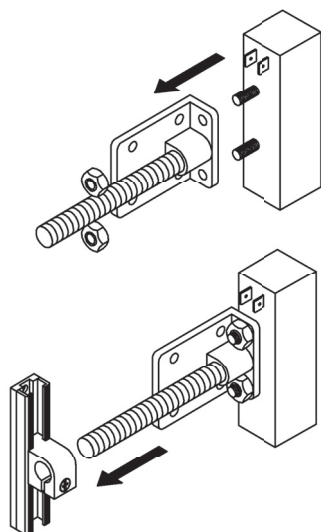
CODICE / CODE
1130 00 00



Schema di montaggio / Assembly scheme

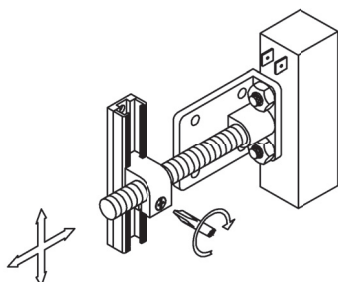
Il sensore deve essere fissato sulla bassetta prima di inserire quest'ultima sul supporto.

The sensor must be fixed to header before fixing the header to the support.



L'assieme sensore-bassetta può ora essere inserito all'interno dell'assieme composto da supporto più guida.

The sensor with the header can now be inserted in the support on the jaw.



SISTEMA DI FISSAGGIO PREMONTATO

PREASSEMBLED FIXING SYSTEM

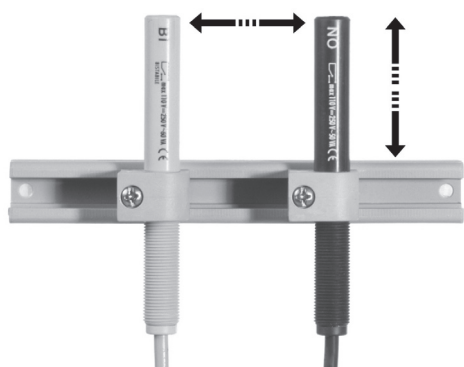


FIG. 1

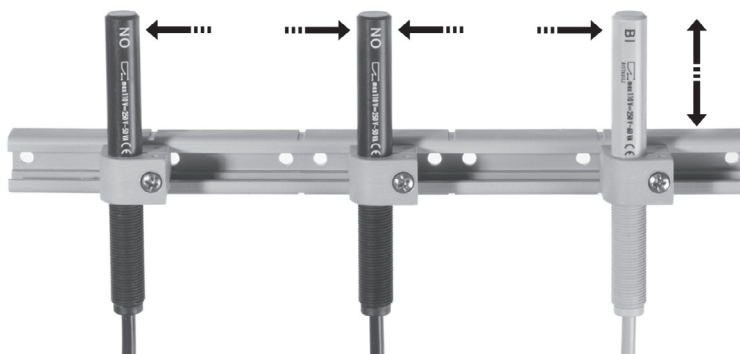


FIG. 2

La STEM è in grado di fornire un **sistema di controllo per ascensori premontato** secondo richieste specifiche del cliente; in particolare sono regolabili le distanze X, Y per quando riguarda la configurazione mostrata in figura 1 e le distanze X1, X2 e Y per quanto riguarda la configurazione mostrata in figura 2.

*STEM is suitable to supply a **preassembled lift control system** according to customer's specific requests; particularly distances X, Y, concerning the configuration shown in figure 1, and distances X1, X2, Y concerning the configuration shown in figure 2, are adjustable.*

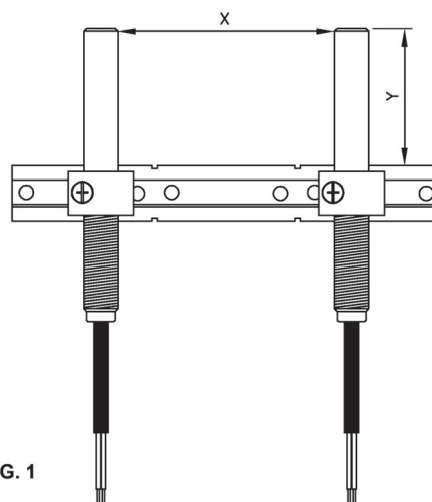
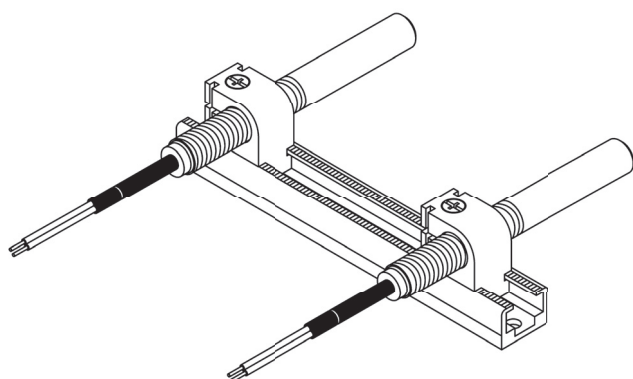


FIG. 1

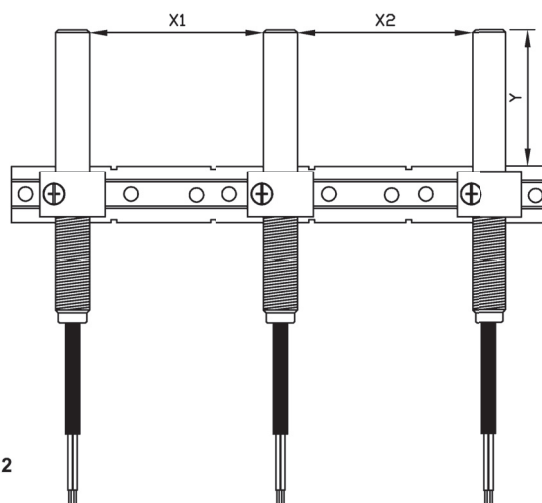
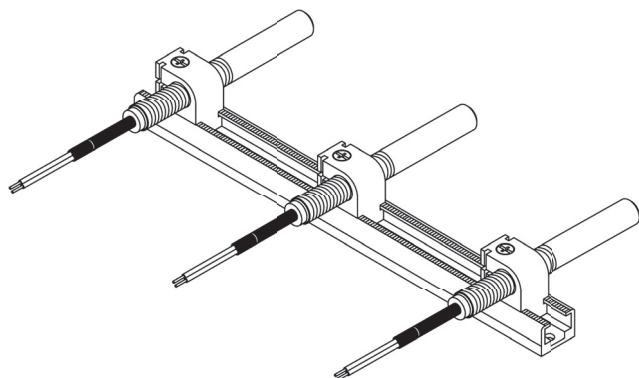


FIG. 2