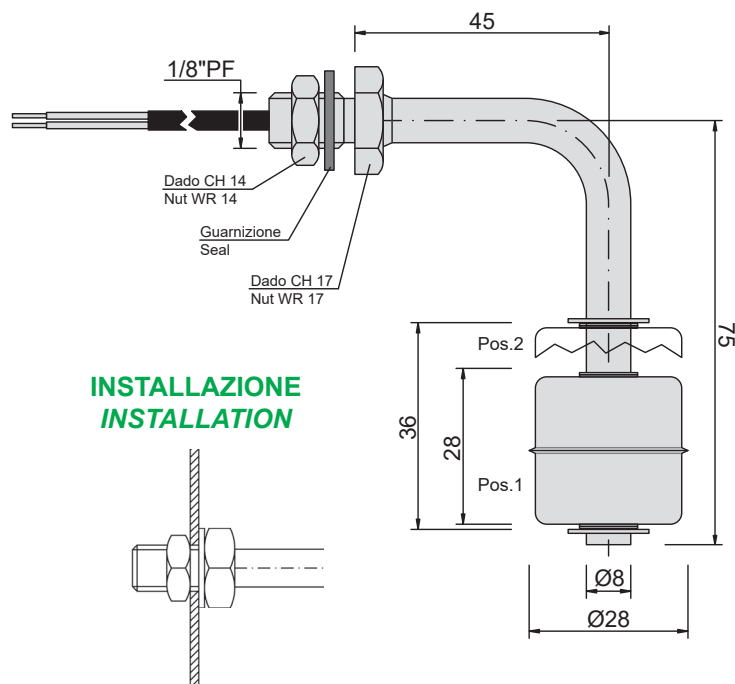


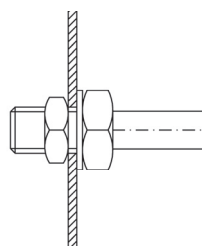
Livellostato Verticale con Cavo Vertical Float Switch with Cable

Corpo in Acciaio INOX AISI 304
Stainless Steel Housing AISI 304

Galleggiante in Acciaio INOX AISI 316
Stainless Steel Float AISI 316

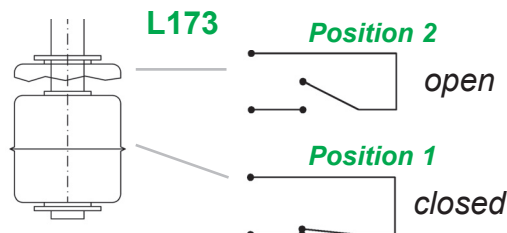
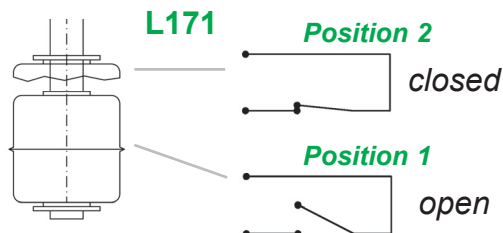




INSTALLAZIONE INSTALLATION



Diametro foro montaggio
min: 10 mm

Assembling hole diameter
min: 10 mm



SCHEMA DI COLLEGAMENTO CONNECTION SCHEME	CORPO BODY	CONTATTO - CONTACT					CAVO - CABLE			
	Serie Series	Contatto Contact	Tensione Voltage V (max)		Potenza Power W (max)	Corrente Current A (max)	Cavo Cable	Diametro Diameter mm	Conduttori Conductors mm²	Caratteristiche Features
			Vdc	Vac						
<div>NO</div> 	L171	FB	240	200	50	0,5	DS	3,5	0,35	SILICONE BIPOLARE NERO BLACK BIPOLAR SILICONE
<div>NC</div> 	L173	FB	240	200	50	0,5	DS	3,5	0,35	SILICONE BIPOLARE NERO BLACK BIPOLAR SILICONE

ESEMPIO DI SIGLA DI ORDINAZIONE ORDER CODE EXAMPLE

L171 FB DS 0 300

SERIE SERIES	L171
TIPO CONTATTO CONTACT TYPE	FB
TIPO CAVO CABLE TYPE	DS
CARATTERISTICHE SPECIALI SPECIAL FEATURES	0
LUNGHEZZA CAVO in cm. (standard 300 cm.) CABLE LENGTH in cm. (standard 300 cm.)	300

CARATTERISTICHE SPECIALI (a richiesta) SPECIAL FEATURES (on request)

Materiale corpo: AISI 316
Housing material: AISI 316

CARATTERISTICHE TECNICHE TECHNICAL FEATURES

Vita meccanica / Mechanical life	300.000 cicli / cycles
Frequenza di manovra / Operating frequency	10 cicli-min. / cycles-min.
Precisione alla ripetibilità / Repeatability precision	0,1 mm
Resistenza agli urti / Impact resistance	30 g / 11 ms
Resistenza alle vibrazioni / Vibration resistance	0,35 mm 10-55 Hz
Temperatura di esercizio / Working temperature	-20°C + +120°C
Pressione max di esercizio / Max working pressure	5 bar
Grado di protezione (per le parti sommerse) Protection degree (for submerged parts)	IP68
Grado di protezione generale General protection degree	IP68

