

Livellostato Verticale con Cavo silicone  
Vertical Float Switch with silicone Cable

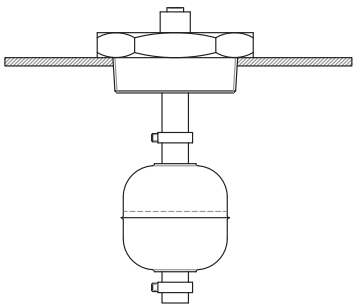
Corpo in Acciaio INOX AISI 304  
Stainless Steel Housing AISI 304  
Galleggiante in Acciaio INOX AISI 316  
Stainless Steel Float AISI 316



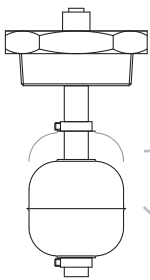
Serie  
Series

L701

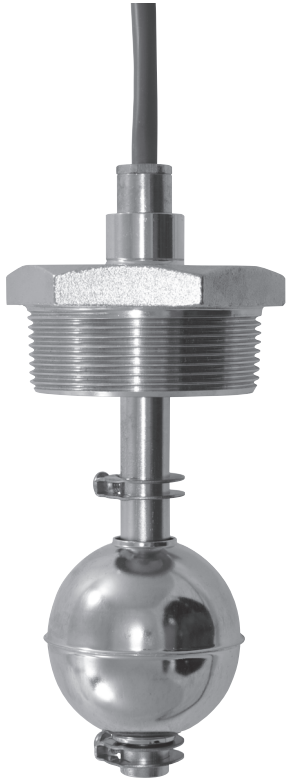
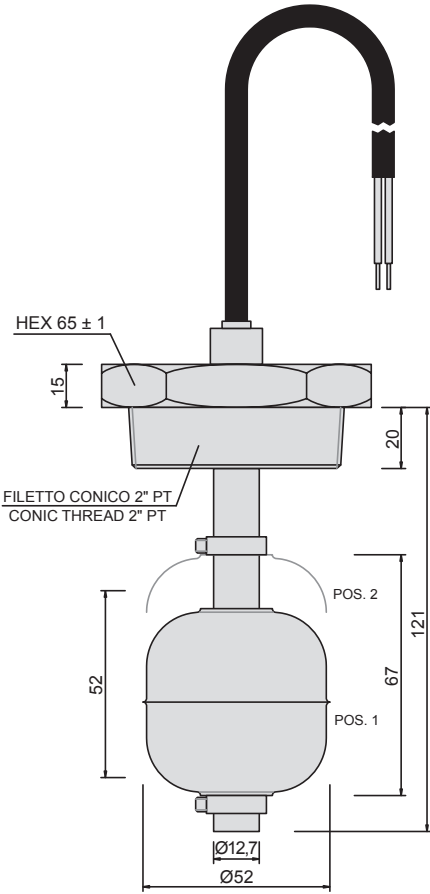
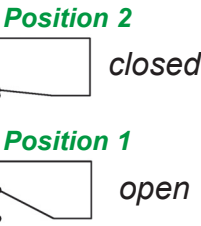
INSTALLAZIONE / INSTALLATION



Foro filettato montaggio: 2" PT  
Assembling threaded hole: 2" PT



L701

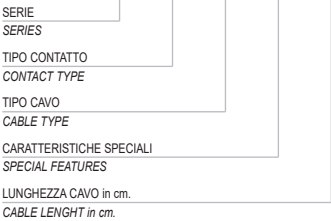


NON OMOLOGATO / NOT HOMOLOGATED

SCHEMA DI COLLEGAMENTO CONNECTION SCHEME	CORPO BODY	CONTATTO - CONTACT				CAVO - CABLE			
	Serie Series	Contatto Contact	Tensione Voltage V max	Potenza Power W max	Corrente Current A max	Cavo Cable	Diametro Diameter mm	Conduttori Conductors mm <sup>2</sup>	Caratteristiche Features
NO marr. / brown blu / blue	L701	FB	240	50	0,5	DS	6	0,75	SILICONE BIPOLARE NERO BLACK BIPOLAR SILICONE
NC marr. / brown blu / blue	L703	FB	240	50	0,5	DS	6	0,75	SILICONE BIPOLARE NERO BLACK BIPOLAR SILICONE

ESEMPIO DI SIGLA DI ORDINAZIONE  
ORDER CODE EXAMPLE

L701 FB DS 0 100



CARATTERISTICHE TECNICHE  
TECHNICAL FEATURES

Vita meccanica / Mechanical life	300.000 cicli / cycles
Frequenza di manovra / Operating frequency	10 cicli-min. / cycles-min.
Precisione alla ripetibilità / Repeatability precision	0,1 mm
Resistenza agli urti / Impact resistance	30 g / 11 ms
Resistenza alle vibrazioni / Vibration resistance	0,35 mm 10-55 Hz
Temperatura di esercizio / Working temperature	-20°C ÷ +120°C
Pressione max di esercizio / Max working pressure	5 bar
Grado di protezione (per le parti sommerse) Protection degree (for submerged parts)	IP68
Grado di protezione generale General protection degree	IP68

